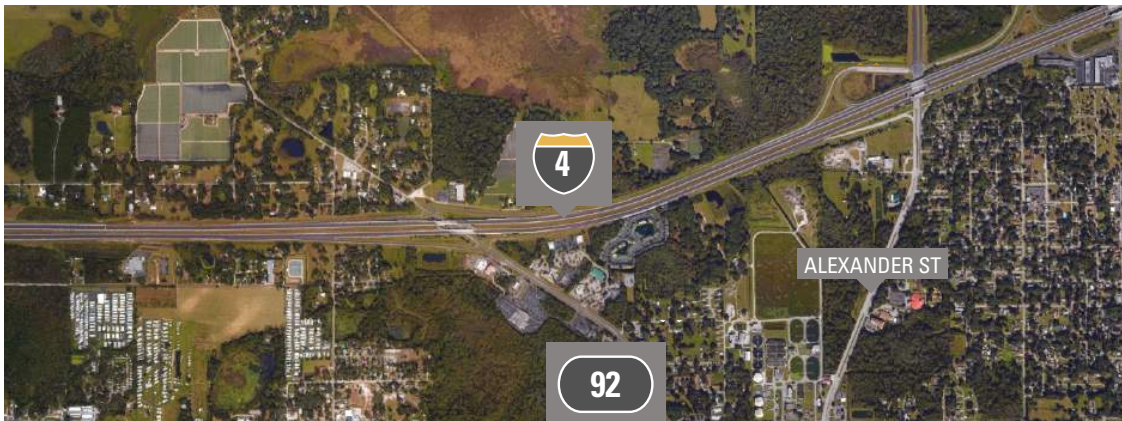


## Plant City Logistics Center

- › The best location in the Plant City/ Lakeland market based on access to demand/population
- › 3 miles to full interchange on Interstate 4
- › 2 acres of outside fenced storage
- › Space available for dry storage
- › Traffic Count: 24,500 cars per day

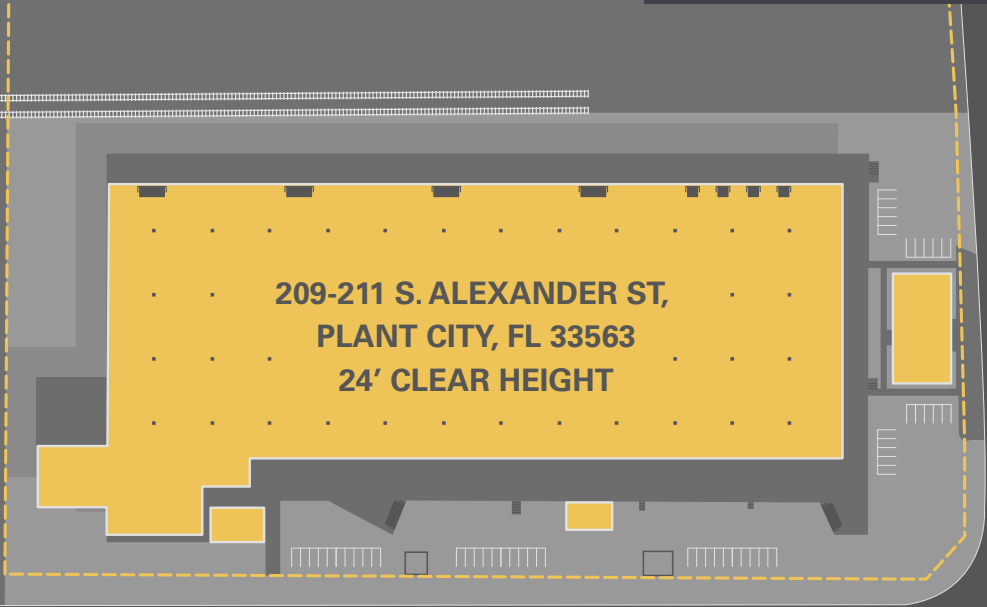
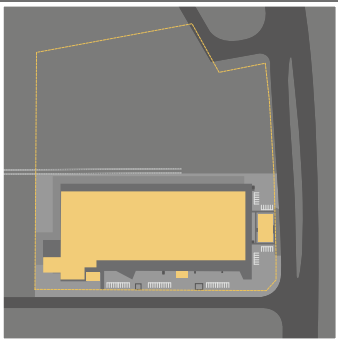
## Features

*Great distribution location on Alexander Street in Plant City with easy access to Interstate 4 going west to Tampa and east to Lakeland and Orlando. Less than thirty minutes to Tampa; One hour to Orlando or Sarasota.*



**FOR SALE OR LEASE**

**59,159 ± S.F.**



**209-211 S. ALEXANDER ST,  
PLANT CITY, FL 33563  
24' CLEAR HEIGHT**

**S ALEXANDER ST**

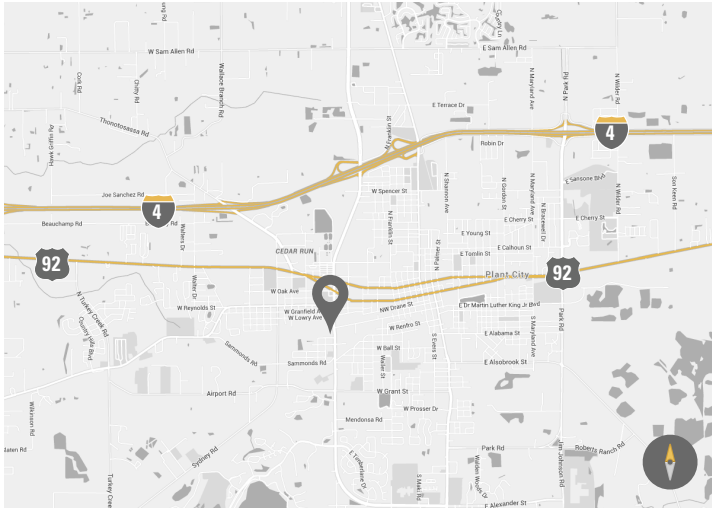
**BOWMAN AVE**



**Property Specifications**

*209-211 S. Alexander St, Plant City, FL 33563*

|                           |                   |
|---------------------------|-------------------|
| Acreage                   | 4.002             |
| Total Enclosed Area       | 59,159 ± SF       |
| Enclosed Rail Dock to +40 | 9,676 ± SF        |
| Canopied Loading Platform | 7,311± SF         |
| Power                     | 1200 amps 3 phase |
| Loading                   | Four Dock Doors   |
| Rail Doors                | 3                 |
| Zoning                    | M-1               |



**MATTHEW S. KELLY**

Vice President | Tampa Florida

- 907 982 7141
- matt@keatingresources.com
- www.keatingresources.com